

Our **PFC Sinewave™ LCD Series** mark a continuation in the tradition of excellence on the development, design and manufacture our engineering team has achieved. They sacrifice neither versatility nor power to achieve that sleek look, and mark the right choice for a demanding **Home, SOHO, or mid-Business Application** environments. They are designed for customers who value high versatility, manageability, and performance based on a modern stable platform.

These series have been developed on a **Line-Interactive, Energy-Saving, active PFC power supply compatibility** modern hardware platform designed to meet virtually all of today's **Home/SOHO/mid-Business** needs, reducing dependence on multiple systems. They can work with any type of computer/server using active PFC power supply, demanding **true Sinewave!** With 3-main Battery & Surge backed outlets as well as 3-surge backed outlets, enhanced safety features and a highly controlled operation, you can go ahead and connect onto them your most precious electronic devices and emergency systems, being ready in case of a power outage!

Unique features within these models make them easy to use and manage, protecting your investment for many years to come! From functionality down to aesthetic details, our **PFC Sinewave™ LCD Series** give and overall high-tech impression, and we are proud to recommend them to you!



**CP1300EPFCLCD/
CP1500EPFCLCD**



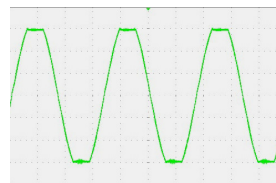
CP900EPFCLCD

- Energy Saving System based on **GreenPower UPS™** Technology
- **PFC Sinewave™** Output Power supporting all systems with active PFC power supplies and other special applications
- Line Interactive Technology and CPU based full Digital Control
- Automatic Voltage Regulator
- EMI, RFI, Surge & Lightning Spike Protection
- Phone, Fax, Modem, DSL, and Network Protection
- Elaborate Power Management Software Included
- We offer 50,000.- EUR Connected Equipment Life Time Guarantee
- Auto-Restart, Auto-Charge, and Scheduled Shutdown Function
- Easy and Fast Battery Replacement / Serviceability
- Computer Connection via USB port
- Intelligent LCD-based multi-function Status Monitor with variable Control/Setup Functions
- Elaborate Features and High Reliability
- USB Charger Functionality on certain models
- Suitable for the demanding Home, SOHO & mid-size Businesses



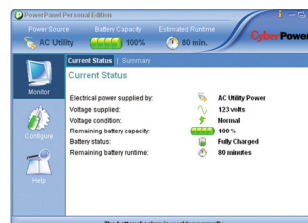
GreenPower UPS™

- ~ 75% Electricity Saving!
- Nearly no Heat Generation
- Great Overall Energy Efficiency
- Lower TCO
- Longer Battery Life



PFC SINEWAVE™ OUTPUT
For those applications that require true *Sine Wave* power to function properly, like power supplies with active *Power Factor Correction* (active-PFC) attributes that are popular on certain servers/modern-computers, **CyberPower's PFC Sinewave™** gets the job done!

PowerPanel® Personal Edition Management S/W



AUTO-SHUTDOWN SOFTWARE

CyberPower PowerPanel® Personal Edition Management Software, is Compatible with Windows 7, VISTA, XP, 2000 Pro., ME, 98, Windows Server 2003/2008, Mac OS and Linux.

CAPACITY & RUN-TIME:

- **CP900EPFCLCD:** 900VA / 540W. Typical Runtime @ half / full load: 8 / 2 min
- **CP1300EPFCLCD:** 1300VA / 780W. Typical Runtime @ half / full load: 10 / 2 min
- **CP1500EPFCLCD:** 1500VA / 900W. Typical Runtime @ half / full load: 11 / 3 min

LCD DISPLAY:

Used to display detailed information on the UPS status, (Line / Battery Mode), and current power conditions. Displays many different Information blocks including: Load Level Meter, Voltage Sensitivity Meter, Battery Charge Level Meter, Scheduling Information, Events Log, Fault Indicator, Overload Indicator, Silent Mode Indicator, AVR in Use, Battery in Use, Input Voltage Level, Output Voltage Level, Estimated Run-Time based on Actual Load, and more.

INPUT POWER:

- Voltage Range: 165V ~ 265V
- Frequency Range: 47~63 Hz, auto-sensing

OUTPUT POWER:

- On Battery Output Voltage: Pure Sinewave at 230V (+/- 7%)
- On Battery Output Frequency: 50Hz / 60 Hz (+/- 1%)
- Typical Transfer Time: 4 ms
- Overload Protection Scheme: On Main Power by *Circuit Breaker*, and on Battery Power by *Internal Current Limiting*
- Surge/Lightning Protection: **CP900EPFCLCD:** 405 Joules. **CP1300EPFCLCD & CP1500EPFCLCD:** 810 Joules.
- Automatic Voltage Regulator (AVR): Yes, Boost Only

BATTERY INFORMATION:

- Sealed Maintenance-Free Lead-Acid Batteries, User Replaceable
- **CP900EPFCLCD:** 12V, 9AH x 1. **CP1300EPFCLCD:** 12V, 7AH x 2. **CP1500EPFCLCD:** 12V, 8.5AH x 2
- Charging Current: 0.6A
- Typical Recharge Time: 8 Hours

STATUS INDICATORS:

- Multi-function Intelligent LCD Display
- Power-On LED
- Audio Alarms: Overload & Fault (*constant tone*), On-Battery (*beep twice every 30 sec*), & Low-Battery (*rapid beeping*)

RECEPTACLES & CONNECTORS:

- Six Outlets, (Shucko for the continental European version and 2 x UK type outlets plus 4 x IEC type outlets for the British version). 3 x Battery Backup & Surge, and 3 x only for full-time Surge Protection.
- RJ11/RJ45 Input/Output for LAN/DLS/Modem/Phone-FAX Surge Protection
- USB x 1 port connection to a computer standard on all models
- **CP1300EPFCLCD & CP1500EPFCLCD Models Only:** RS232 x1 port also available for computer connection
- **CP1300EPFCLCD & CP1500EPFCLCD Models Only:** 2 x USB chargers on the front panel allowing for the charge of various micro-electronic devices (+5VDC output).

MANAGEMENT & CONTROL:

- Manual Self-Test
- Auto Re-Charge and Auto Re-Start
- Scheduled Shutdown Function
- Power Panel® Personal & Business Edition elaborate software for PC connectivity with Management Control

PHYSICAL INFORMATION:

Dimensions (L x W x H mm): **CP900EPFCLCD:** 275x100x230. **CP1300EPFCLCD & CP1500EPFCLCD:** 370x100x265.

Weight: **CP900EPFCLCD:** 6.6kg. **CP1300EPFCLCD:** 9.5kg. **CP1500EPFCLCD:** 10.9kg.

Storage Temperature: -15°C ~ +45°C

Operating Temperature: 0°C ~ 40°C

Operating Humidity: 0%~95% non-condensed



DISTRIBUTED BY:

CyberPower's Manufacturing Facilities are ISO 9001:2000, ISO 14000, and QC080000 Approved