



## Fixed Shelf 250lbs/114kg Black

Fixed shelf to enable the mounting of tower units, monitors, and other equipment into the rack environment.

Includes: Installation Guide, Mounting Hardware

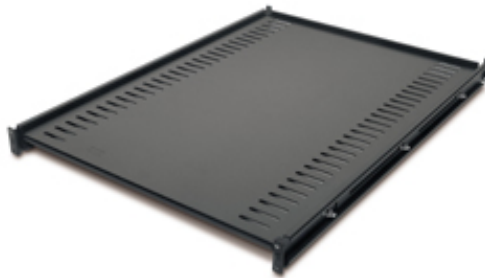
Part Number : **AR8122BLK**



- [Compare Models](#)
- [Email Technical Specifications](#)
- [Printer Friendly](#)

### Additional Information

- [Product Overview](#)
- [User Manual & Installation Guides](#)
- [Product Distribution](#)



[\[+\] More Images](#)

## Technical Specifications

### Physical

Net Weight	18.00 lbs. ( 8.18 kg)
Maximum Height	1.75 inches ( 44 mm)
Maximum Width	18.50 inches (470 mm)
Maximum depth	26.00 inches (660 mm)
Shipping Weight	23.00 lbs. ( 10.45 kg)
Shipping Height	30.50 inches (775 mm)
Shipping Width	21.60 inches (549 mm)
Shipping Depth	3.50 inches ( 89 mm)
Weight Capacity (static load)	250.00 lbs. (113.64 kg)
Rack Height	1U
Color	Black

### Features:

- o 4 Post Mounting
- o Adjustable mounting depth
- o Occupies 1U of rack space
- o Ventilated

### Conformance

Standard Warranty	2 years repair or replace
Standards	EIA-310-D