



T3C

Smart Button

Requires using with the EZVIZ Home Gateway A3¹

Expert control with a simple click

In addition to apps or voice controls, you can now use this simple smart button to switch on and off your entire EZVIZ sensor system², or press it to send an emergency alarm. It's mini-sized and battery-powered to go anywhere within your reach.



Two-In-One
Remote Control



Easy Pairing



Energy-Saving Design
with Long Battery Life



Small and
Light Design



Place Anywhere³



Protect your loved ones with one easy click

Use this indoor button to put your EZVIZ sensor system in action in a second, and leave home with peace of mind. Or, give it to the seniors or kids who are home alone, so they can get help if they need it.

- ①  Push
- ②  Double Push
- ③  Hold

Arm / Disarm Sensor Control

Emergency Button

Install it anywhere within your reach

Place the button next to your bed, desk or anywhere you need an extra touch of security. You can set it up as a fixed smart switch, or use it around your home as a remote device³.

Stick it to any surface

Carry it around your home

Place it anywhere

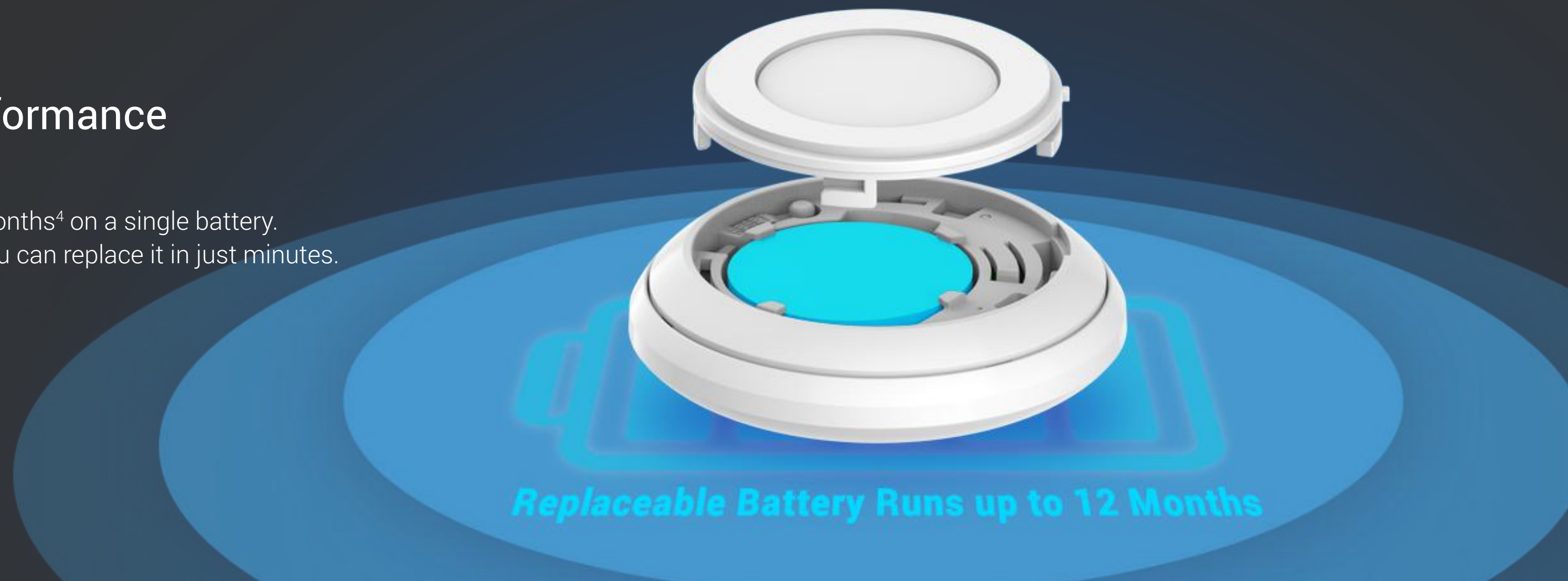
Extremely easy set-up

Use the EZVIZ app to manage the button after being connected to the EZVIZ Home Gateway. Link it with your EZVIZ sensors, choose its mode, and view the activity log – it's all at your fingertips.



Long-lasting performance

The T3C can last up to 12 months⁴ on a single battery. When the power runs out, you can replace it in just minutes.



- 1 The gateway is not included in the purchase of the smart button.
- 2 The T3C Smart Button only works with the EZVIZ Sensor Kit and must be connected to the A3 Home Gateway. Currently the button is only compatible with the T1C PIR Sensor and T2C Open/Close Sensor. Other compatible sensors will be launched in the near future.
- 3 The button can only be used at home with your EZVIZ Home Gateway to ensure steady connectivity. Once it's disconnected from the Gateway, it will no longer work as an operating controller.
- 4 Data from EZVIZ lab test results, based on the usage of 15 clicks per day. May vary due to environmental factors.

Specifications Smart Button Model CS-T3C-A0-BG

General

Operation Conditions	-10 °C to 55 °C (14 °F to 131 °F), humidity 95% or less (non-condensing)
Dimensions	Φ 40.6 × 12.3mm (Φ 1.6 × 0.5 inch)
Package Size	92 × 52 × 93 mm (3.6 × 2.0 × 3.7 inch)
Weight	68 g (2.4 oz) with package

Control Methods

Single Click	< 2 s
Double Click	Interval time < 0.5 s
Long Press	≥ 2 s
Modes	Arm/Disarm Mode, Emergency Button Mode

Function

Low Battery Reminder	Supports
Anti-Tamper Alarm	Supports
Installation Method	Place anywhere; adhesive back for peel-and-stick installation

Battery

Battery Type	Cell battery CR2032
Battery Life	Up to 2 years (Based on the usage of 15 clicks per day)

Network

Protocol	ZigBee 3.0
Communication Distance	< 200 m (Tested in open environment)

In the box

- T3C Smart Button
- Doubled-sided Tape
- Regulatory Information
- Quick Start Guide

Certifications

CE / RoHS / REACH / WEEE / UKCA

Specifications are subject to change without notice. "EZVIZ" and other trademarks and logos are the properties of EZVIZ in various jurisdictions.

<https://www.ezvizlife.com/>