





Huawei NetEngine AR600 Series Enterprise Routers








Huawei AR600 series enterprise routers are 1U fixed routers designed for use in small- and medium-sized business (SMBs) and small-sized enterprise branches. The AR600 integrates various service features such as SD-WAN, routing, switching, security, and WLAN, providing diversified services and high performance.

Product Overview

Huawei's next-generation NetEngine AR600 series enterprise routers use multi-core processors and a non-blocking switching structure, helping to deliver three times the industry average performance. The NetEngine AR600 also integrates functions such as SD-WAN, cloud management, routing, switching, VPN, WLAN, and security, ensuring diversified and cloud-based services are fully supported. Huawei NetEngine AR600 series enterprise routers can be deployed at branches of SMBs and small-sized enterprises as required to provide enterprise network egress capabilities. The NetEngine AR600 series include two sub series, NetEngine AR650 series and NetEngine AR610 series.

NetEngine AR650 series consists of models such as the NetEngine AR651C, NetEngine AR651, NetEngine AR651W, NetEngine AR651W-8P, NetEngine AR657W. The NetEngine AR610 series consists of models such as the NetEngine AR611, NetEngine AR611W, NetEngine AR611-LTE4EA, NetEngine AR611W-LTE6EA, NetEngine AR617VW, NetEngine AR617VW-LTE4EA, NetEngine AR617VW-LTE4. Huawei provides various models which can meet networking requirements of enterprises of different scales.

 <p>NetEngine AR651C</p>	<ul style="list-style-type: none"> • Fixed WAN ports: 2*GE SFP, 2*GE RJ45 • Fixed LAN ports: 8*GE RJ45(can be configured as WAN) • Dimensions (H x W x D): 43.6 mm x 250.0 mm x 210.0 mm
 <p>NetEngine AR651</p>	<ul style="list-style-type: none"> • Fixed WAN ports: 2*GE Combo • Fixed LAN ports: 8*GE RJ45(can be configured as WAN) • Dimensions (H x W x D): 44.0 mm x 300.0 mm x 216.4 mm
 <p>NetEngine AR651W</p>	<ul style="list-style-type: none"> • Fixed WAN ports: 2*GE Combo • Fixed LAN ports: 8*GE RJ45(can be configured as WAN) • Wi-Fi: 802.11ac/b/g/n • Dimensions (H x W x D): 44.0 mm x 300.0 mm x 216.4 mm
 <p>NetEngine AR651W-8P</p>	<ul style="list-style-type: none"> • Fixed WAN ports: 2*GE Combo • Fixed LAN ports: 8*GE RJ45(can be configured as WAN) • Wi-Fi: 802.11ac/b/g/n • PoE: compliance with IEEE 802.3af and 802.3at • Dimensions (H x W x D): 44.0 mm x 300.0 mm x 216.4 mm

 <p>NetEngine AR657W</p>	<ul style="list-style-type: none"> • Fixed WAN ports: 2*GE Combo, 1VDSL 35B • Fixed LAN ports: 8*GE RJ45(can be configured as WAN) • Wi-Fi: 802.11ac/b/g/n • Dimensions (H x W x D): 44.0 mm x 300.0 mm x 216.4 mm
 <p>NetEngine AR611W</p>	<ul style="list-style-type: none"> • Fixed WAN ports: 1*GE Combo • Fixed LAN ports: 4*GE RJ45(can be configured as WAN) • Wi-Fi: 802.11ac/b/g/n • Dimensions (H x W x D): 38.0 mm x 240.0 mm x 161.5 mm
 <p>NetEngine AR611</p>	<ul style="list-style-type: none"> • Fixed WAN ports: 1*GE Combo • Fixed LAN ports: 4*GE RJ45(can be configured as WAN) • Dimensions (H x W x D): 38.0 mm x 240.0 mm x 161.5 mm
 <p>NetEngine AR611-LTE4EA</p>	<ul style="list-style-type: none"> • Fixed WAN ports: 1*GE Combo, 1 * LTE • Fixed LAN ports: 4*GE RJ45(can be configured as WAN) • Dimensions (H x W x D): 38.0 mm x 240.0 mm x 161.5 mm
 <p>NetEngine AR611W-LTE6EA</p>	<ul style="list-style-type: none"> • Fixed WAN ports: 1*GE Combo, 1 * LTE • Fixed LAN ports: 4*GE RJ45(can be configured as WAN) • Wi-Fi: 802.11ac/b/g/n • Dimensions (H x W x D): 38.0 mm x 240.0 mm x 161.5 mm
 <p>NetEngine AR617VW</p>	<ul style="list-style-type: none"> • Fixed WAN ports: 1*GE Combo, 1 * VDSL 35B • Fixed LAN ports: 4*GE RJ45(can be configured as WAN) • 2 * FXS • Wi-Fi: 802.11ac/b/g/n • Dimensions (H x W x D): 38.0 mm x 240.0 mm x 161.5 mm
 <p>NetEngine AR617VW-LTE4EA NetEngine AR617VW-LTE4 **</p>	<ul style="list-style-type: none"> • Fixed WAN ports: 1*GE Combo, 1 * VDSL 35B, 1 * LTE • Fixed LAN ports: 4*GE RJ45(can be configured as WAN) • 2 * FXS • Wi-Fi: 802.11ac/b/g/n • Dimensions (H x W x D): 38.0 mm x 240.0 mm x 161.5 mm

** Note: NetEngine AR617VW-LTE4 is sold only in Latin America.

Features and Benefits

Features and Benefits

Service Requirement	Features and Benefits
High performance	<ul style="list-style-type: none"> • Multi-core processors and a non-blocking switching structure • Three times the industry average performance, providing the lowest latency for key services
High reliability	<ul style="list-style-type: none"> • Link backup for enterprise services, improving reliability • Fault detection and determination in milliseconds, minimizing service interruption time
Easy O&M	Multiple management modes, including SD-WAN management, SNMP-based network management, web-based network management, and cloud-based management, simplifying network deployment and reducing OPEX
Service convergence	Integration of functions such as routing, switching, VPN, security, and WLAN, meeting diversified enterprise service requirements, saving space, and reducing TCO
Security	Built-in firewall, IPS(AR651/AR651W/AR651W-8P/AR657W), URL filtering, and multiple VPN technologies, providing comprehensive security protection capabilities
SD-WAN Ready	<ul style="list-style-type: none"> • Built-in SD-WAN solution, building cost-effective and business-friendly connections over the Internet • ZTP (email-, USB-, and DHCP-based deployment), minimizing skill requirements and provisioning devices in minutes • First packet identification (FPI) for SaaS applications and service awareness for complex applications, identifying over 90% of applications • Traffic steering based on bandwidth and link quality, ensuring experience of key applications and improving bandwidth utilization to up to 90%

Architecture Highlights

Architecture Feature	Benefits
Multi-core processor	High-performance multi-core processors, supporting high-speed WAN connections, powerful route calculation capabilities, and enhanced L4-L7 service processing
Extensive network interfaces	Extensive flexible interface cards such as LAN, WAN, 3G/LTE, and WLAN

Product Specifications

NetEngine AR650 Series Technical Specifications

Item	NetEngine AR651C	NetEngine AR651	NetEngine AR651W	NetEngine AR651W-8P	NetEngine AR657W
System Parameters					
Forwarding Performance (LAN - > WAN + WAN - > LAN, NAT + ACL + QoS, IMIX, Default)	1 Gbps	1 Gbps	1 Gbps	1 Gbps	1 Gbps
Forwarding Performance (LAN - > WAN + WAN - > LAN, NAT + ACL + QoS, IMIX, Boost License)	1.5 Gbps	2 Gbps	2 Gbps	2 Gbps	2 Gbps
SD-WAN performance (1400 Bytes)	1400Mbps	1800Mbps	1800Mbps	1800Mbps	1800Mbps
SD-WAN performance (IMIX)	600Mbps	800 Mbps	800 Mbps	800 Mbps	800 Mbps
IPsec performance (IMIX)	1 Gbps	2 Gbps	2 Gbps	2 Gbps	2 Gbps
IPsec performance (1400 bytes)	2 Gbps	3.7 Gbps	3.7 Gbps	3.7 Gbps	3.7 Gbps
Fixed WAN ports	2 x GE SFP, 2 x GE RJ45	2 x GE combo	2 x GE combo	2 x GE combo	2*GE Combo, 1VDSL 35B
Fixed LAN ports	8 x GE RJ45(can be configured as WAN)				
Service extension slot	-	1 x MIC	1 x MIC	1 x MIC	1 x MIC
Wi-Fi	-	-	Dual-band (2.4 GHz and 5 GHz), 802.11b/g/n/ac		
PoE	-	-	-	support PoE	-
PoE capability	-	-	-	GE0 to GE7 support PoE+ out, Maximum output power of 100 W	-
USB port	1 x USB	1 x USB	1 x USB	1 x USB	1 x USB
Auxiliary or console port	1 x RJ45 console port				
Memory	1 GB	2 GB	2 GB	2 GB	2 GB
Flash memory	1 GB	1 GB	1 GB	1 GB	1 GB
Dimensions and Weight					

Item	NetEngine AR651C	NetEngine AR651	NetEngine AR651W	NetEngine AR651W-8P	NetEngine AR657W
Router dimensions, With no mounting bracket installed (W x D x H)	300.0mm x 220.3mm x 44.0mm	300.0mm x 220.3mm x 44.0mm	300.0mm x 220.3mm x 44.0mm	300.0mm x 220.3mm x 44.0mm	300.0mm x 220.3mm x 44.0mm
Packaging dimensions (W x D x H)	435mm x360mm x 110mm	435mm x360mm x 110mm	435mm x360mm x 110mm	435mm x 360mm x 110mm	435mm x 360mm x 110mm
Weight	1.75 kg	1.8 kg	1.9 kg	1.9 kg	1.88 kg
Rack	IEC	IEC	IEC	IEC	IEC
Occupied rack space	1U	1U	1U	1U	1U
Power Specifications, Power Consumption, and Heat Dissipation					
Rated input voltage range (AC)	100 V to 240 V	100 V to 240 V	100 V to 240 V	100 V to 240 V	100 V to 240 V
Rated input frequency (AC)	50 Hz/60 Hz	50 Hz/60 Hz	50 Hz/60 Hz	50 Hz/60 Hz	50 Hz/60 Hz
Maximum input voltage range (AC)	90 V to 264 V	90 V to 264 V	90 V to 264 V	90 V to 264 V	90 V to 264 V
Maximum input current (AC)	3 A	3 A	1.5 A	1.5 A	1.5 A
Maximum output power (AC)	36 W	36 W	60 W	60 W	60 W
Minimum power consumption	15 W	22 W	31 W	26 W	34 W
Maximum power consumption	22 W	29 W	42 W	117 W	45 W
Fan module	Natural heat dissipation, without fans	Built-in unpluggable fan modules			
Airflow	N/A	Left to right	Left to right	Left to right	Left to right
Noise level	N/A	41.9dB	47.4dB	47.4dB	47.4dB
Environment Parameters					
Operating temperature	0 ° C to 45 ° C				
Operating humidity	5% to 95% (non-condensing)				
Operating altitude	< 5000 m (16404.2 ft.)				
Storage temperature	-40 ° C to +70 ° C				
Storage altitude	< 5000 m (16404.2 ft.)				
Safety and Regulatory Standards					

Item	NetEngine AR651C	NetEngine AR651	NetEngine AR651W	NetEngine AR651W-8P	NetEngine AR657W
EMC standards compliance	CISPR32 Class A EN 55032 Class A CISPR24 EN 55024 ETSI EN 300 386 ETSI EN 301 489-1 ETSI EN 301 489-17 ETSI EN 301 489-52				
Environmental standards compliance	RoHS REACH WEEE				
Safety standards compliance	IEC 60950-1 EN 60950-1				
Features and Protocols					
Basic function	DHCP server/client/relay, PPPoE server/client, PPPoA server/client, PPPoEoA server/client, NAT, and sub-interface management				
LAN	IEEE 802.1P, IEEE 802.1Q, IEEE 802.3, VLAN management, VLAN aggregation, MAC management, STP/RSTP				
Voice	RTP, SIP, SIP AG, IP PBX/TDM PBX, VoIP, SBC (AR617VW/AR617VW-LTE4EA/AR617VW-LTE4 support)				
3G/LTE	-	FDD LTE, TDD LTE, DC-HSPA+, HSPA+, HSPA, and WCDMA			
WLAN (AC)	AP management (AC discovery, AP access, and AP management), CAPWAP, WLAN user management, WLAN radio management (802.11a/b/g/n/ac), WLAN QoS (WMM), and WLAN security (WEP, WPA, WPA2, key management)				
WLAN (AP)	-	AP management, WLAN QoS (WMM), WLAN security (WEP/WPA/WPA2/key management), WLAN radio management (802.11b/g/n/ac), and WLAN user management			
IPv4 unicast routing	Routing policies, static routes, RIP, OSPF, IS-IS, BGP				
IPv6 unicast routing	Static routes, routing policies, RIPng, OSPFv3, IS-ISv6, BGP4+				
Basic IPv6 function	IPv6 ND, IPv6 PMTU, IPv6 FIB, IPv6 ACL, ICMPv6, DNSv6, DHCPv6				
IPv6 tunneling	Manual tunnel, automatic tunnel, GRE tunnel, IPv6 over IPv4 tunnel, 6 to 4 tunnel, ISATAP				
Multicast	IGMP v1/v2/v3, PIM-SM, PIM-DM, MSDP, MBGP, IPv6 PIM, MLD				
MPLS ****	-	LDP, MPLS L3 VPN, VLL, PWE3, static LSP, dynamic LSP, MPLS TE, IP FRR, LDP FRR, TE FRR			
VPN	IPsec VPN, GRE VPN, DSVPN, A2A VPN, L2TP VPN, L2TPv3 VPN, VxLAN				
QoS	DiffServ mode, priority mapping, traffic policing (CAR), traffic shaping, congestion avoidance, congestion management, MQC (traffic classifier, traffic behavior, and traffic policy), hierarchical QoS, WLAN QoS, FR QoS, Smart Application Control (SAC)				
WAN Optimization	Multi-fed and Selective receiving, per-packet load balancing				
Security	ACL (v4/v6), domain-based stateful firewall, 802.1X authentication, MAC address authentication, portal authentication, AAA authentication, RADIUS authentication, HWTACACS authentication, PKI, broadcast storm suppression, ARP security, ICMP attack defense, URPF, CPCAR, blacklist, attack				

Item	NetEngine AR651C	NetEngine AR651	NetEngine AR651W	NetEngine AR651W-8P	NetEngine AR657W
	source tracing, online behavior management, IPS(AR651/AR651W/AR651W-8P/AR657W), URL filtering				
Management and maintenance	Upgrade management, device management, web-based network management, GTL, SNMP (v1/v2c/v3), RMON, NTP, CWMP, Auto-Config, URL-based/USB-based/DHCP deployment, NETCONF/YANG, CLI, Netstream, IP FPM, TCP FPM, TWAMP Light, IP accounting, NQA				

NetEngine AR610 Series Technical Specifications

Item	NetEngine AR611	NetEngine AR611W	NetEngine AR611-LTE4EA	NetEngine AR611W-LTE6EA	NetEngine AR617VW	NetEngine AR617VW-LTE4EA / AR617VW-LTE4
System Parameters						
Forwarding Performance (LAN - > WAN + WAN - > LAN, NAT + ACL + QoS, IMIX)	300Mbps	300Mbps	300Mbps	300Mbps	300Mbps	300Mbps
IPsec performance (IMIX)	200Mbps	200Mbps	200Mbps	200Mbps	200Mbps	200Mbps
SD-WAN performance (1400 Bytes)	250Mbps	250Mbps	250Mbps	250Mbps	250Mbps	250Mbps
SD-WAN performance (IMIX)	80Mbps	80Mbps	80Mbps	80Mbps	80Mbps	80Mbps
Fixed WAN ports	1 * GE combo	1 * GE combo	1 * GE combo, 1 * LTE CAT4	1 * GE combo, 1 * LTE CAT6	1 * GE combo, 1 * VDSL 35B	1 * GE combo, 1 * VDSL 35B, 1 * LTE CAT4
Standards compliance and frequency bands supported	-	-	LTE FDD: Band 1/3/5/7/8/20 LTE TDD: Band 38/40/41 WCDMA: Band 1/5/8 GSM: 900/1800(MHz)	•LTE FDD: B1/3/5/7/8/20/28/32 •LTE TDD: B38/B40/B41 •2×CA: B1+B1/B5/B8/B20/B28、 B3+B3/B5/B7/B8/B20/B28、 B7+B5/B7/B8/B20/B28、 B20+B32、	-	AR617VW-LTE4EA: LTE FDD: Band 1/3/5/7/8/20 LTE TDD: Band 38/40/41 WCDMA: Band 1/5/8 GSM: 900/1800(MHz) AR617VW-LTE4:

Item	NetEngine AR611	NetEngine AR611W	NetEngine AR611-LTE4EA	NetEngine AR611W-LTE6EA	NetEngine AR617VW	NetEngine AR617VW-LTE4EA / AR617VW-LTE4
				B38+B38、 B40+B40、 B41+B41 •WCDMA: B1/B3/B5/B8		LTE FDD: Band 1/2/3/4/5/7/8/20 WCDMA: Band 1/2/5/8 GSM: 850/900/1800/1900 (MHz)
Fixed LAN ports	4 * GE RJ45f (can be configured as WAN)					
Voice	-	-	-	-	2 * FXS	2 * FXS
Wi-Fi	-	2x2 MIMO, 802.11b/g/n/ ac	-	2x2 MIMO, 802.11b/g/n/ac		
Auxiliary or console port	1 x RJ45 console port					
USB port	1*USB	1*USB	1*USB	1*USB	1*USB	1*USB
Memory	1GB	1GB	1GB	1GB	1GB	1GB
Flash memory	1GB	1GB	1GB	1GB	1GB	1GB
Dimensions and Weight						
Router dimensions, With no mounting bracket installed (H x W x D)	38.0 mm x 240.0 mm x 161.5 mm					
Weight(Excluding packaging materials)	0.66kg					
Form Factor/Height	Desktop/Wall-mounted installation					
Power Specifications, Power Consumption, and Heat Dissipation						
Rated input voltage range (AC)	100 V to 240 V	100 V to 240 V	100 V to 240 V	100 V to 240 V	100 V to 240 V	100 V to 240 V
Rated input frequency (AC)	50 Hz/60 Hz	50 Hz/60 Hz	50 Hz/60 Hz	50 Hz/60 Hz	50 Hz/60 Hz	50 Hz/60 Hz
Maximum input voltage range (AC)	90 V to 264 V	90 V to 264 V	90 V to 264 V	90 V to 264 V	90 V to 264 V	90 V to 264 V
Maximum input current (AC)	0.8A	0.8A	0.8A	0.8A	0.8A	0.8A

Item	NetEngine AR611	NetEngine AR611W	NetEngine AR611-LTE4EA	NetEngine AR611W-LTE6EA	NetEngine AR617VW	NetEngine AR617VW-LTE4EA / AR617VW-LTE4
Maximum output power (AC)	24W	24W	24W	24W	24W	24W
Maximum power consumption	12W	12W	12 W	16 W	14W	17W
Fan module	Natural heat dissipation, without fans					
Airflow	N/A					
Noise level	N/A					
Environment Parameters						
Operating temperature	0 ° C to 45 ° C					
Operating humidity	5% to 95% (non-condensing)					
Operating altitude	< 5000 m (16404.2 ft.)					
Storage temperature	-40 ° C to +70 ° C					
Storage altitude	< 5000 m (16404.2 ft.)					
Safety and Regulatory Standards						
EMC standards compliance	CISPR32 Class A EN 55032 Class A CISPR24 EN 55024 ETSI EN 300 386 ETSI EN 301 489-1 ETSI EN 301 489-17 ETSI EN 301 489-52					
Environmental standards compliance	RoHS REACH WEEE					
Safety standards compliance	IEC 60950-1 EN 60950-1					
Features and Protocols						
Basic function	DHCP server/client/relay, PPPoE server/client, PPPoA server/client, PPPoEoA server/client, NAT, and sub-interface management					
LAN	IEEE 802.1P, IEEE 802.1Q, IEEE 802.3, VLAN management, VLAN aggregation, MAC management, STP/RSTP					

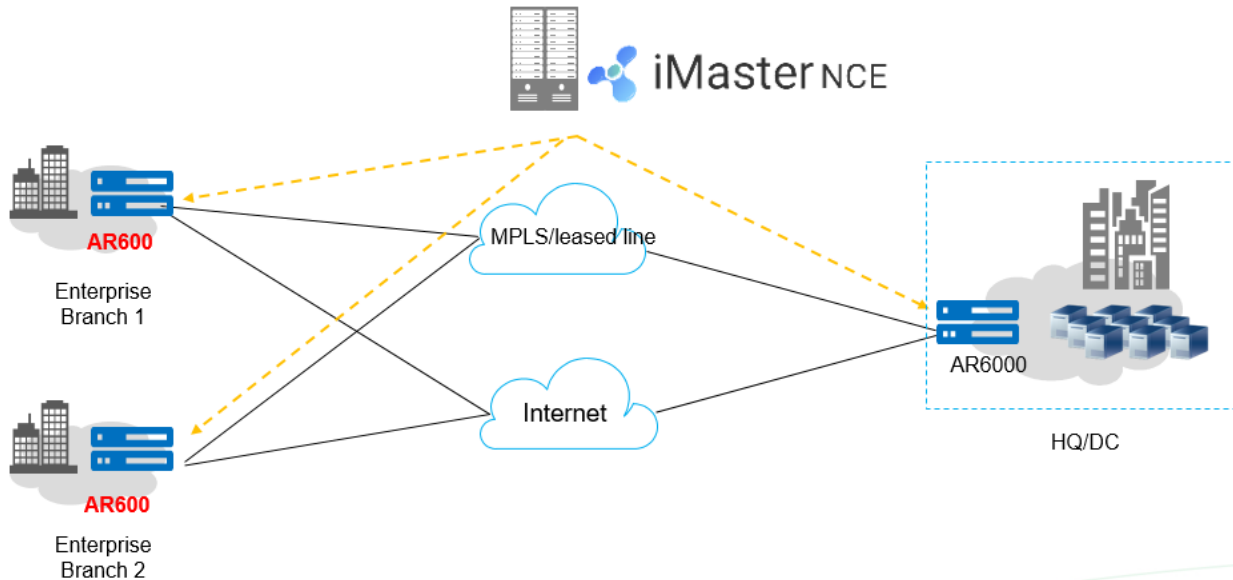
Item	NetEngine AR611	NetEngine AR611W	NetEngine AR611-LTE4EA	NetEngine AR611W-LTE6EA	NetEngine AR617VW	NetEngine AR617VW-LTE4EA / AR617VW-LTE4
Voice	-				RTP, SIP, SIP AG, IP PBX/TDM PBX, VoIP, SBC	
3G/LTE	-		FDD LTE, TDD LTE, HSPA+, and WCDMA	FDD LTE, TDD LTE, DC-HSPA+, HSPA+, and WCDMA	-	FDD LTE, TDD LTE, HSPA+, and WCDMA
WLAN (AC)	AP management (AC discovery, AP access, and AP management), CAPWAP, WLAN user management, WLAN radio management (802.11a/b/g/n/ac), WLAN QoS (WMM), and WLAN security (WEP, WPA, WPA2, key management)					
WLAN (AP)	AP management, WLAN QoS (WMM), WLAN security (WEP/WPA/WPA2/key management), WLAN radio management (802.11b/g/n/ac), and WLAN user management(Support in AR611W,AR617VW,AR614VW-LTE,AR617VW-LTE4EA,AR611W-LTE6EA)					
IPv4 unicast routing	Routing policies, static routes, RIP, OSPF, IS-IS, BGP					
IPv6 unicast routing	Static routes, routing policies, RIPng, OSPFv3, IS-ISv6, BGP4+					
Basic IPv6 function	IPv6 ND, IPv6 PMTU, IPv6 FIB, IPv6 ACL, ICMPv6, DNSv6, DHCPv6					
IPv6 tunneling	Manual tunnel, automatic tunnel, GRE tunnel, IPv6 over IPv4 tunnel, 6 to 4 tunnel, ISATAP					
Multicast	IGMP v1/v2/v3, PIM-SM, PIM-DM, MSDP, MBGP, IPv6 PIM, MLD					
VPN	IPsec VPN, GRE VPN, DSVPN, A2A VPN, L2TP VPN, L2TPv3 VPN, VxLAN					
QoS	DiffServ mode, priority mapping, traffic policing (CAR), traffic shaping, congestion avoidance, congestion management, MQC (traffic classifier, traffic behavior, and traffic policy), hierarchical QoS, WLAN QoS, FR QoS, Smart Application Control (SAC)					
Security	ACL (v4/v6), domain-based stateful firewall, 802.1X authentication, MAC address authentication, portal authentication, AAA authentication, RADIUS authentication, HWTACACS authentication, PKI, broadcast storm suppression, ARP security, ICMP attack defense, URPF, CPCAR, blacklist, attack source tracing, online behavior management, URL filtering					
Management and maintenance	Upgrade management, device management, web-based network management, GTL, SNMP (v1/v2c/v3), RMON, NTP, CWMP, Auto-Config, URL-based/USB-based/DHCP deployment, NETCONF/YANG, CLI, Netstream, IP FPM, TCP FPM, TWAMP Light, IP accounting, NQA					

Networking and Application

- SD-WAN Using Hybrid Links**

In the SD-WAN Solution, the NetEngine AR600 functions as the gateway of SMBs and small-sized enterprise branches and supports hybrid access using multiple physical links, such as Internet links, and LTE links. The solution also leverages Huawei's next-generation controller, the Agile Controller, which implements centralized and visualized management. The NetEngine AR600 provides extensive SD-WAN features and delivers optimal service experience for enterprises through intelligent application identification, intelligent traffic steering, and intelligent acceleration. For details about Huawei SD-WAN Solution, visit <https://e.huawei.com/en/solutions/business-needs/enterprise-network/sd-wan>.

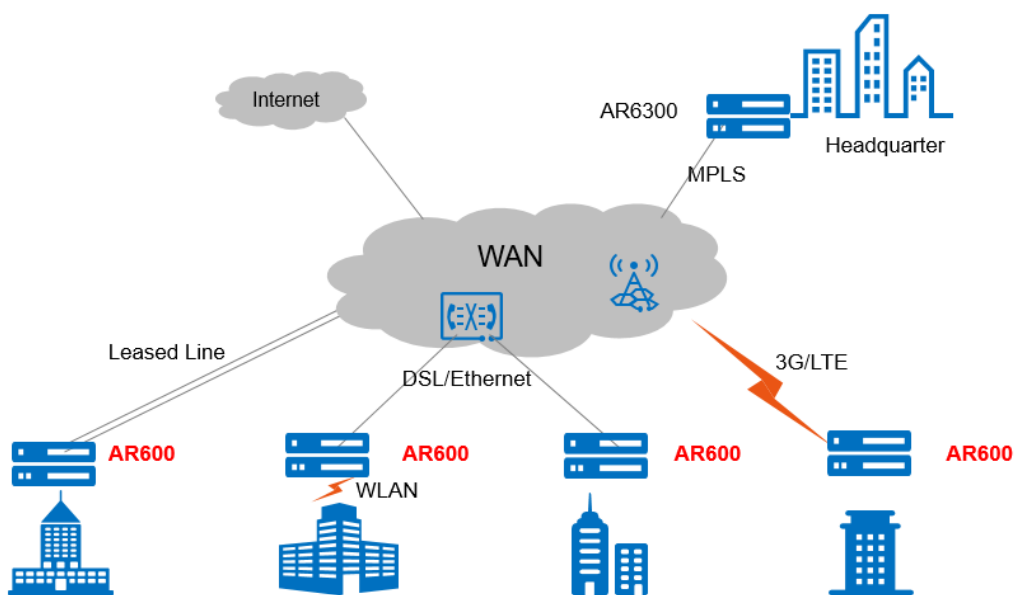
SD-WAN networking



- WAN Interconnection Scenario**

In this scenario, the NetEngine AR600 series routers are used as enterprise branch egresses and provide flexible WAN access methods to support remote network connections. A single NetEngine AR600 router can satisfy different access requirements, for example, for the private line, Ethernet, 3G, LTE, and WLAN access, helping the customer reduce deployment and maintenance costs while helping them extract much value.

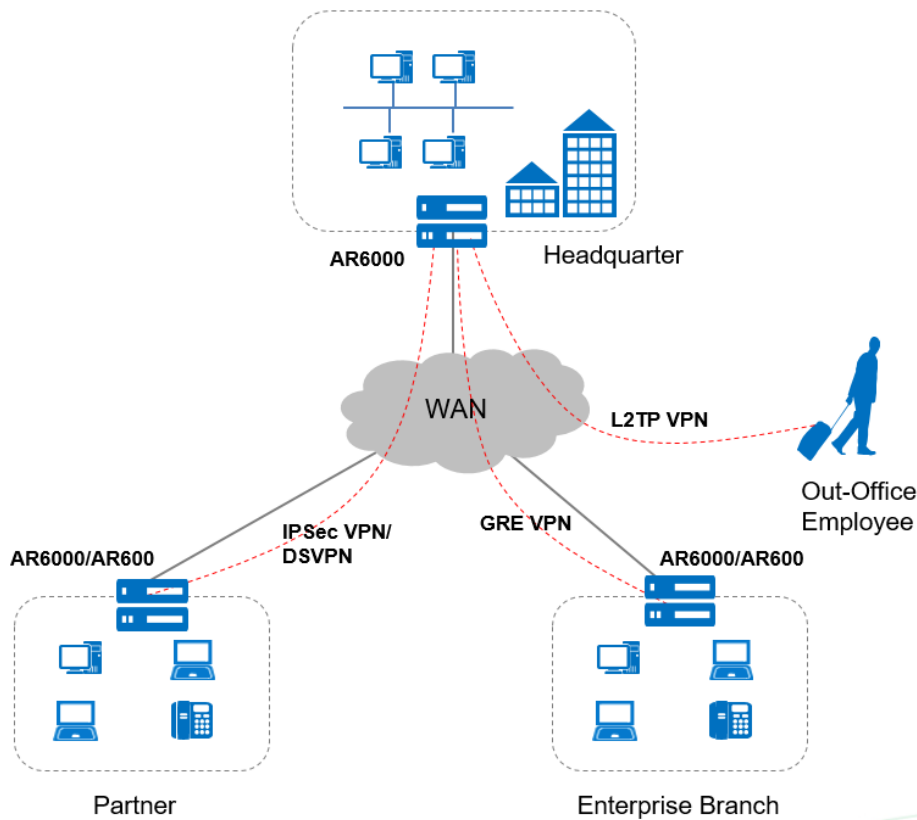
WAN interconnection networking



- Building Different Types of VPNs by Leveraging Internet Resources**

The NetEngine AR600 provides various secure access functions for communication between enterprise branches and between branches and headquarters. These functions also allow an enterprise's partners to access its resources. Secure tunnels such as GRE VPN, IPSec VPN, DSVPN, L2TP VPN, and EVPN tunnels can be set up between the headquarters and branches for secure data access and transmission. The NetEngine AR600 supports quick tunnel deployment and authentication for branches. Furthermore, partners authenticated and authorized by the AR600 can remotely access the enterprise resources over these tunnels.

VPN networking



Ordering Information

The NetEngine AR600 series routers are configured by selecting and installing the appropriate configuration module. The configuration module ordering information and descriptions are shown in the following tables.

The NetEngine AR650 sub series routers require 3 types of configuration modules:

- Basic software configuration
- Software license configuration
- Performance license configuration

The basic software configuration modules provide functions such as routing, switching, voice, and security.

The software license configuration modules provide additional functions such as SRP, DSVPN.

The NetEngine AR610 sub series routers don't need to configure the license.

License function and description

License Name	Description
Value-Added Data Package	Smart Policy Routing (SPR) is included
Value-Added Security Package	1. Efficient VPN (EVPN), DSVPN, Smart Application Control (SAC), Any to Any VPN, IPS and URL filtering are included. 2. IPS supports online update service, and update service needs extra license
IPS Service Subscribe 1 Year	IPS Service Subscribe 1 Year

Ordering components

Chassis Configuration	Description
NetEngine AR651C	AR651C AC host, 10*GE RJ45,2*GE SFP, 1*USB, with the AC/DC adapter
NetEngine AR651	AR651,2*GE combo WAN,8*GE LAN,1*USB,1*MIC slot
NetEngine AR651W	AR651W,2*GE combo WAN,8*GE LAN,1*USB,802.11b/g/n/ac,2*2MIMO,1*MIC slot
NetEngine AR651W-8P	AR651W-8P,2*GE combo WAN,8*GE LAN (PoE+),1*USB,802.11b/g/n/ac,2*2MIMO,1*MIC slot
NetEngine AR657W	AR657W,2*GE combo WAN,1*VDSL 35B WAN,8*GE LAN,1*USB,802.11b/g/n/ac,2*2 MIMO,1*MIC slot
NetEngine AR611	AR611, 1*GE COMBO WAN, 4*GE LAN, 1*USB
NetEngine AR611W	AR611W, 1*GE COMBO WAN, 4*GE LAN, 1*USB, Wi-Fi 2.4G+5G
NetEngine AR611-LTE4EA	AR611-LTE4EA ,1*GE COMBO WAN, 1*LTE, 4*GE LAN, 1*USB
NetEngine AR611W-LTE6EA	AR611W-LTE6EA ,1*GE COMBO WAN, 1*LTE, 802.11b/g/n/ac, 4*GE LAN, 1*USB
NetEngine AR617VW	AR617VW, 1*GE COMBO WAN, 1*VDSL, 4*GE LAN, 1*USB, Wi-Fi 2.4G+5G
NetEngine AR617VW-LTE4EA	AR617VW-LTE4EA, 1*GE COMBO WAN, 1*VDSL, 1*LTE, 4*GE LAN, 1*USB, Wi-Fi 2.4G+5G
NetEngine AR617VW-LTE4	AR617VW-LTE4, 1*GE COMBO WAN, 1*VDSL, 1*LTE, 4*GE LAN, 1*USB, Wi-Fi 2.4G+5G
MIC Card	Description
MIC-1ELTE6-EA	Function module, AR, MIC-1ELTE6-EA, WCDMA/LTE FDD/LTE TDD CAT6 interface card
MIC-1LTE6-EA	Function module, AR, MIC-1LTE6-EA, FDD/TDD/HSPA+/WCDMA CAT6 interface card
MIC-1LTE4-EA	Function Module, AR, MIC-1LTE4-EA, FDD/WCDMA/HSPA+ Interface Card
Accessories of Chassis (LTE antenna)	Description
ASMAM0006	Omni-directional Antenna, 698MHz-960MHz/1710MHz-2690MHz,1.0dBi(698MHz-960MHz)&3dBi(1710MHz-2690MHz),10W,SMA-J
ASMAM0008	Isotropic Antenna, 698MHz~960MHz/1420MHz~2690MHz,2.1dBi(max)(698-960/2110-2170MHz)/4.6dBi(max)(1710-1990/2500-2690MHz),vertical,Omni,5W,SMA-J,No Bracket
License	Description
LAR0DATAE08	AR600 Value-Added Data Package
LAR0SECE08	AR600 Value-Added Security Package
LAR0TP10	AR600/AR700/AR6100 Threat Protection Service Subscribe 1 Year
LAR0IPS08	AR600 IPS Service Subscribe 1 Year
LAR0PERFE08	AR650 Performance license

More Information


For more information about Huawei next-generation AR enterprise routers, visit <http://e.huawei.com> or contact us in the following ways:

- Global service hotline: <http://e.huawei.com/en/service-hotline>
- Logging in to the Huawei Enterprise technical support website: <http://support.huawei.com/enterprise/>
Sending an email to the customer service mailbox: support_e@huawei.com

Copyright © Huawei Technologies Co., Ltd. 2021. All rights reserved.

No part of this document may be reproduced or transmitted in any form or by any means without prior written consent of Huawei Technologies Co., Ltd.

Trademarks and Permissions

 HUAWEI and other Huawei trademarks are trademarks of Huawei Technologies Co., Ltd.

All other trademarks and trade names mentioned in this document are the property of their respective holders.

Notice

The purchased products, services and features are stipulated by the contract made between Huawei and the customer. All or part of the products, services and features described in this document may not be within the purchase scope or the usage scope. Unless otherwise specified in the contract, all statements, information, and recommendations in this document are provided "AS IS" without warranties, guarantees or representations of any kind, either express or implied.

The information in this document is subject to change without notice. Every effort has been made in the preparation of this document to ensure accuracy of the contents, but all statements, information, and recommendations in this document do not constitute a warranty of any kind, express or implied.

Huawei Technologies Co., Ltd.

Address: Huawei Industrial Base
Bantian, Longgang Shenzhen 518129
People's Republic of China
Website: e.huawei.com