

CREATIVE®

# OUTLIER FREE MINI

Wireless IPX5 Bone Conduction Headphones with Adjustable Transducers



# CREATIVE OUTLIER FREE MINI TARGET AUDIENCE



## Sports and Fitness Enthusiasts

Featuring Bluetooth 5.3 wireless technology, a lightweight, titanium memory-alloy and silicone frame, IPX5 rating and an adjustable transducer design, the **Creative Outlier Free Mini** is targeted primarily at sports and fitness enthusiasts who lead an active lifestyle and would appreciate a pair of durable and water-resistant bone conduction headphones to accompany them on their fitness journey. The safe, open-ear design also ensures that users stay aware of their surroundings while they enjoy music with their workout / exercise.

# CREATIVE OUTLIER FREE MINI TARGET AUDIENCE



## Executives and Working Professionals

The bone conduction headphone can also be targeted at executives and working professionals who would appreciate a pair of headphones with an open-ear design that allows them to enjoy music, yet have the flexibility to respond to colleagues at work without taking them off. In addition to the features mentioned before, **Creative Outlier Free Mini** also comes with Bluetooth multipoint and a built-in microphone that'll address the productivity and communication needs of these users.

# CREATIVE OUTLIER FREE MINI FEATURE OVERVIEW

**New Product Look with a  
More Compact Wraparound  
Neckband for Better Fit**

Multi-function Control Buttons

Certified with IPX5\* Sweat  
and Water Resistant Rating

Built-in Microphone for  
Hands-free Conversations

**Up to 6 hours of Total Playtime**

Open-ear Headphone Design with  
Bone Conduction Technology

Magnetic Clip-on  
Charging Connector

\*Protected against low-pressure water jets from any direction, including light or moderate rain.

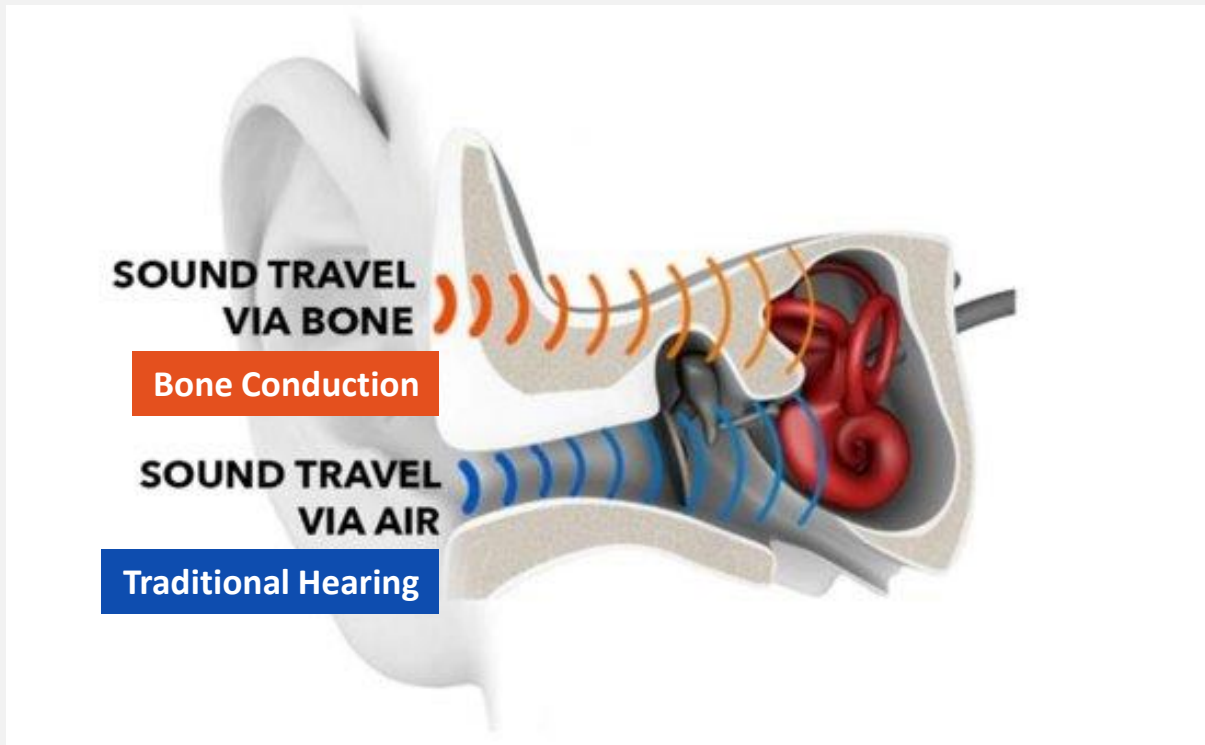
# CREATIVE OUTLIER FREE MINI

## KEY FEATURES

- **New Look with More Compact Neckband for Better Fit**
- Bone Conduction Technology
- Bluetooth 5.3 Wireless Technology
- Low Latency Mode for Games and Movies
- Bluetooth Multipoint Technology
- Supports SBC and AAC Audio Codecs
- Durable and Bend-resistant Titanium Memory-Alloy Frame, Covered in Hypoallergenic Silicone Material
- **Up to 6 Hours of Total Playtime**
- Certified IPX5 Sweat and Water Resistant
- Built-in Microphone for Hands-Free Calls
- Integrated Voice Assistants (Siri / Google)
- Magnetic Clip-on Connector Terminated with USB-A Cable



# CREATIVE OUTLIER FREE MINI FEATURE ZOOM IN



\*Cases where auditory nerves are not damaged

## OPEN-EAR HEADPHONE DESIGN WITH BONE CONDUCTION TECHNOLOGY

### How the technology works?

- Creative Outlier Free Mini utilizes an innovative bone conduction technology to transmit audio via bones, unlike traditionally where sound travel via air.
- Audio is converted into vibrations and sent along the temporal bones via the transducers. The vibrations bypasses the eardrums and the auditory nerves pick up them up to be processed in the brain as sound.

### How can consumers benefit from it?

- The bone conduction method allow users to enjoy high quality audio even without anything stuffed within their ears.
- By bypassing the eardrums, bone conduction technology can also benefit users with some degree of diminished hearing\* to be able to hear better.

# CREATIVE OUTLIER FREE MINI FEATURE ZOOM IN

## How Bone Conduction Technology Can Benefit Multiple Users



### Jogging / Exercise

**Eliminate uncomfortable occlusion effect**

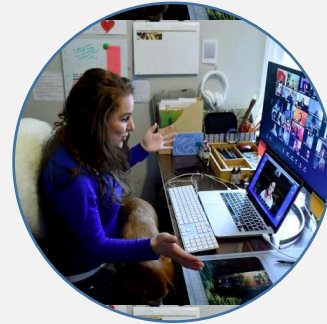
I.e., Elimination of self-generated sound such as foot pounding, chewing etc. when the ear canal is covered or stuffed.



### Cycling / On-the-go

**Situational awareness**

Open-ear headphone design helps users stay aware and avoid potential hazards within immediate environment



### At Home

**Listen to important audio cues around the house**

Be able to hear and respond to audio cues such as whistling kettle, parcel delivery or communicating with your partner while enjoying music at home



### Aid Hearing

**Improve accessibility for users**

Allow individuals with slight hearing deficiencies\* such as compromised eardrums listen to music through bone conduction

\*Cases where auditory nerves are not damaged

# CREATIVE OUTLIER FREE MINI

## TECHNICAL SPECIFICATIONS

### HARDWARE

<b>Product Color</b>	Black
<b>Headphone</b>	Drivers: Bone Conduction Transducers x 2 Frequency Response: 20-20,000 Hz
<b>Microphone</b>	Type: Omni-directional x 1 Frequency Response: <b>100-8,000 Hz</b> Sensitivity (1 kHz): -38 dBV / Pa
<b>Bluetooth Version</b>	Bluetooth 5.3
<b>Supported Bluetooth Profiles</b>	A2DP (Advanced Audio Distribution Profile) AVRCP (Audio / Video Remote Control Profile) HFP (Hands-Free Profile)
<b>Supported Audio Codecs</b>	SBC, AAC Low Latency mode for movies and games
<b>Multipoint Connectivity</b>	Yes (Up to 2 devices)
<b>Maximum RF Output</b>	10 dBm
<b>Wireless Operating Range</b>	Up to 10m / 33 ft unobstructed line-of-sight. Walls and structures may affect range of device

<b>Voice Assistant Support</b>	Siri and Google Assistants
<b>Battery Type</b>	1 x Rechargeable lithium-ion polymer battery
<b>Total Playtime<sup>1</sup></b>	<b>Up to 6 hours on a single, full charge</b> <b>10 mins of charge for 1 hours of playtime</b>
<b>Total Talktime<sup>1</sup></b>	<b>Up to 6 hours per charge</b>
<b>Charging Interface</b>	Magnetic Clip-on Charging Cable Terminated with USB-A connector
<b>Charging Time</b>	Up to 2 hours
<b>Ingress Protection Rating</b>	IPX5 Sweat and Water Resistant
<b>Operating Temperature</b>	0-45°C
<b>Product Measurements</b>	Dimension (L x W x H): 108 x 128 x 44 mm / 4.25 x 5.04 x 1.73" Weight: 26 g / 0.92 oz
<b>Accessories Measurements</b>	Cable length: 0.6 m / 1.97 ft Cable weight: 8.5 g / 0.30 oz Isolation plug weight (per side): 1.3 g / 0.05 oz

<sup>1</sup>Actual battery life may vary depending on usage and settings

\*Items in red are under development and may be subjected to change without notice



# CREATIVE OUTLIER FREE MINI

## SKU INFORMATION

Part Number	Description	Barcode
51EF1130AA000	SYS,HEADSET CREATIVE OUTLIER FREE MINI BK WW	UPC Barcode: 0 54651 19597 4 EAN Barcode: 53 90660 195976 JAN Barcode: 4580181854259 GTIN Pallet: 70054651195973 GTIN Master: 50054651195979 Japan Model#: TBA